

New Jersey Department of Education (NJDOE) School Performance Reports

Jackson Township School District

Tuesday, March 19, 2019

Dan Baginski, Assistant Superintendent

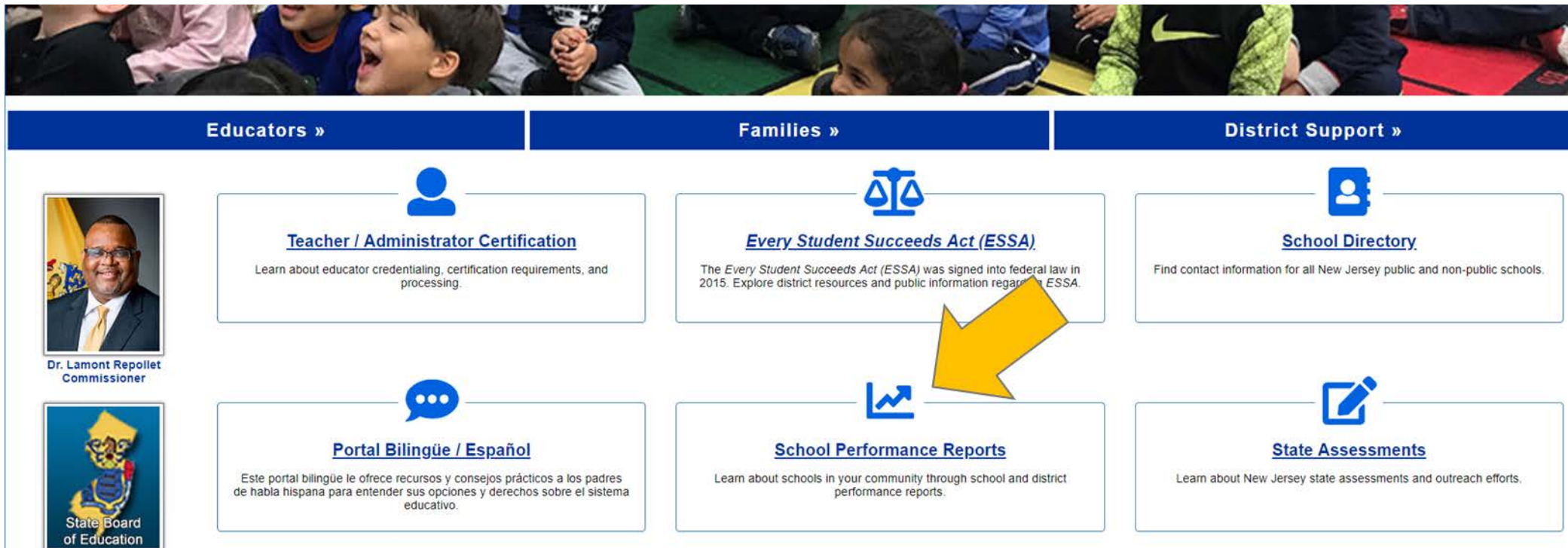


2017-18 School Performance Reports









- The **School Performance Reports** reflect the New Jersey Department of Education's extensive efforts to engage with parents, students, and school communities, and share the information this is most valuable in providing a picture of overall school performance. Communities are encouraged to use these reports to **learn more, start conversations, and engage.**
- In addition to meeting the federal report requirements under *ESSA*, NJDOE is committed to developing reports that **provide stakeholders with a broader picture of their schools and districts.**
- Along with the **detailed School Performance Reports** for each school, district, and state, **one-page Summary Reports** for each school and district are also available. The Summary Reports provide a high-level summary of how well a school or district is performing.
- The reports and resources are also translated into Spanish.

Where Can You Find the Performance Reports?

You can find the performance reports on the New Jersey Department of Education homepage, www.nj.gov/education. Use the “School Performance Reports” link in the center of the page.



The screenshot shows the navigation menu of the New Jersey Department of Education website. At the top, there is a blue header with three main categories: "Educators »", "Families »", and "District Support »". Below this, there are six white boxes with blue borders, each containing an icon, a title, and a brief description. A large yellow arrow points to the "School Performance Reports" box. On the left side, there are two vertical images: a portrait of Dr. Lamont Repollet, Commissioner, and the logo of the State Board of Education.

	Educators »	Families »	District Support »
 Dr. Lamont Repollet Commissioner	 <u>Teacher / Administrator Certification</u> Learn about educator credentialing, certification requirements, and processing.	 <u>Every Student Succeeds Act (ESSA)</u> The <i>Every Student Succeeds Act (ESSA)</i> was signed into federal law in 2015. Explore district resources and public information regarding ESSA.	 <u>School Directory</u> Find contact information for all New Jersey public and non-public schools.
 State Board of Education	 <u>Portal Bilingüe / Español</u> Este portal bilingüe le ofrece recursos y consejos prácticos a los padres de habla hispana para entender sus opciones y derechos sobre el sistema educativo.	 <u>School Performance Reports</u> Learn about schools in your community through school and district performance reports.	 <u>State Assessments</u> Learn about New Jersey state assessments and outreach efforts.

School Performance Reports Homepage

You can also go directly to the School Performance Reports homepage, www.njschooldata.org.



NJ SCHOOL PERFORMANCE REPORT

- [Performance Reports Home Page](#)
- [Resource Documents](#)
- [Reference Guide](#)
- [Summary Report Guide](#)
- [Frequently Asked Questions](#)
- [Videos and Other Resources](#)
- [Data Privacy Rules \(FERPA\)](#)
- [Take our Feedback Survey](#)
- [Download the Data](#)

New Jersey School Performance Reports

The School Performance Reports reflect the NJDOE's extensive efforts to engage with parents, students, and school communities and share the information that is most valuable in providing a picture of overall school performance. Communities are encouraged to use these reports to learn more, start conversations, and engage.

Search for a school or district below to get started.

Select School Year: [View report data prior to 2011-2012](#)

Select Report Type: School District State

Select Search Type: School/District/County Dropdown School Name Zip Code

County:

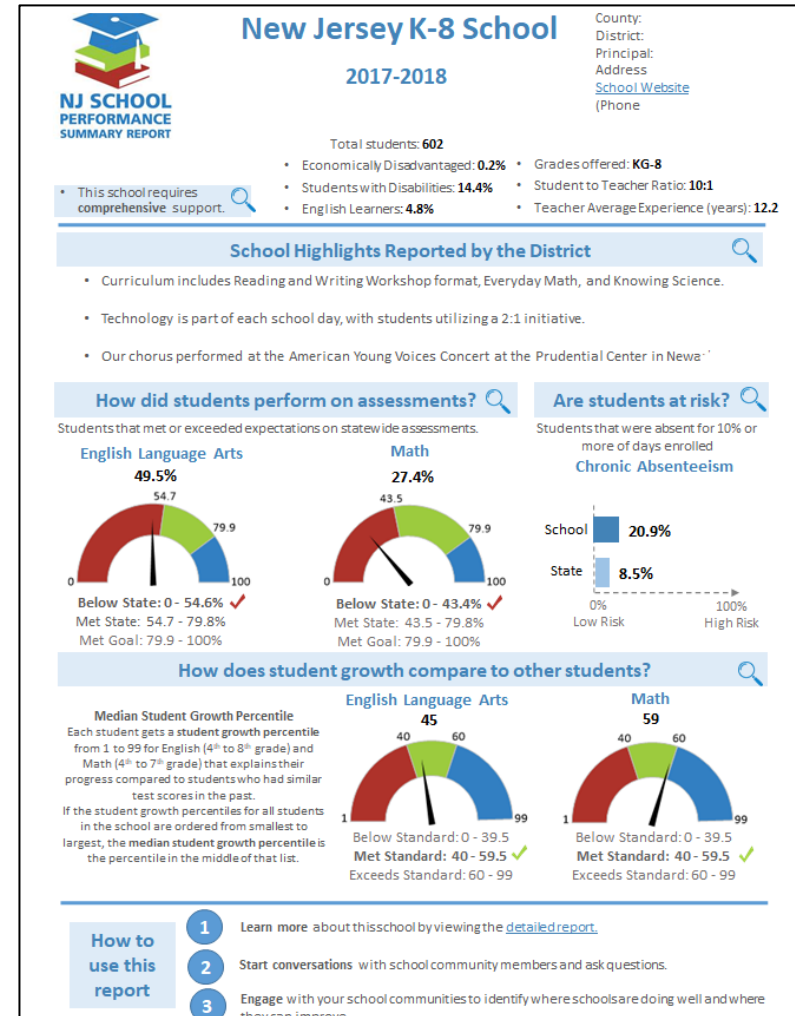
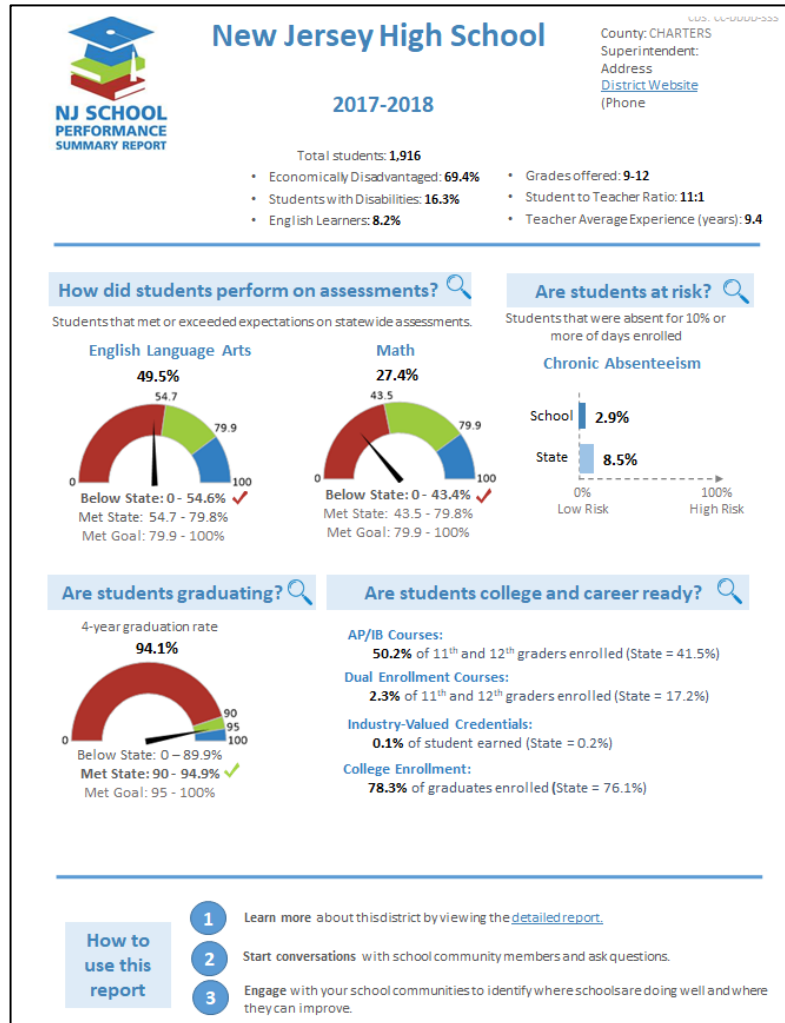
District:

School:

[Search for Reports](#)

[View an alphabetical list of all schools](#)

Summary Performance Reports



What Kinds of Information Do the School Performance Reports Include?

The New Jersey School Performance Reports contain hundreds of data points about schools and districts across New Jersey including:

- ✓ School and district overviews
- ✓ Demographic information
- ✓ Student growth
- ✓ Academic achievement
- ✓ College and career readiness
- ✓ Graduation and post-secondary information
- ✓ School climate and environment
- ✓ Staff information
- ✓ School Accountability
- ✓ School and district narrative information

New Data Added to the Full Reports

NJDOE added several new data elements to the School Performance Reports based on requests received during stakeholder engagement:

- Career and Technical Education (CTE) Program Enrollment
- Dual Enrollment by subject area
- Graduation Pathways
- Progress toward English Language Proficiency
- Teacher and Administrator Demographics
- Harassment, Intimidation, and Bullying (HIB) Incidents by Nature
- Police Notifications
- New Narrative categories: Technology and STEM, Student Safety, Early Childhood Education and Pre-K

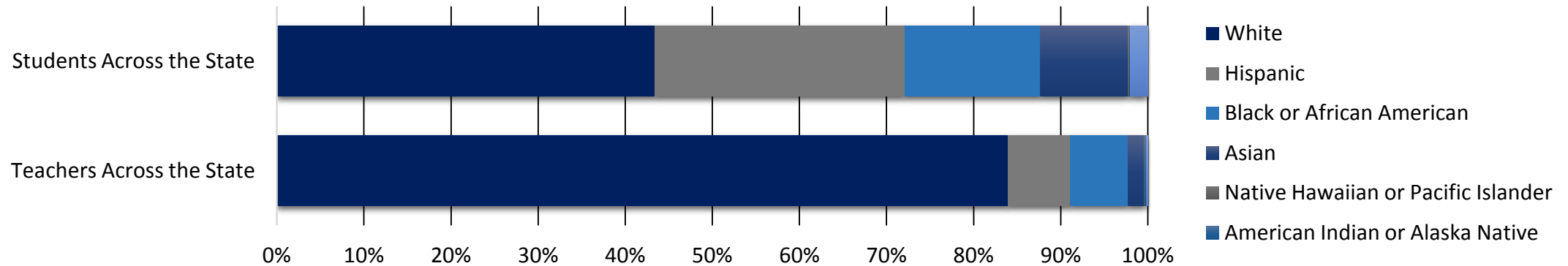
Overview of Performance on Accountability Indicators: 2016-17 vs. 2017-18

Data Measure	2016-17	2017-18
ELA Growth (mSGP)	53	48
Math Growth (mSGP)	63	56
ELA Proficiency	54.8%	55.0%
Math Proficiency	48.6%	48.6%
4-Year Graduation Rate	93.8%	93.6%
5-Year Graduation Rate	92.6%	95.4%
Chronic Absenteeism	14.2%	14.0%

New in the Reports: Teacher Demographic Information (1 of 2)

Do the students in our classrooms have the opportunity to be led by diverse teachers?
Teacher diversity improves outcomes for all students.

Teachers and Students by Demographic Information – State Level



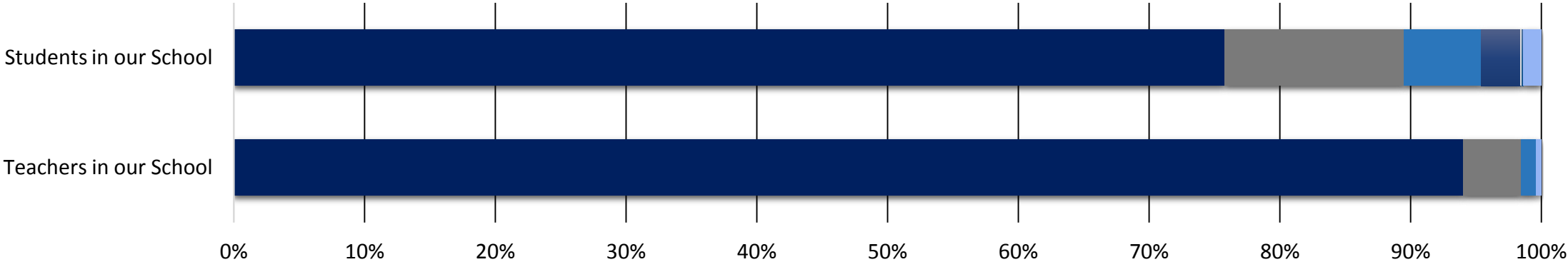
Race	Teachers Across the State	Students Across the State
White	83.9%	43.4%
Hispanic	7.2%	28.7%
Black or African American	6.6%	15.6%
Asian	1.9%	10.0%
Native Hawaiian or Pacific Islander	0.1%	0.2%
American Indian or Alaska Native	0.1%	0.1%
Two or More Races	0.2%	2.0%

New in the Reports:

Teacher Demographic Information (2 of 2)

Do the students in our classrooms have the opportunity to be led by diverse teachers?
 Teacher diversity improves outcomes for all students.

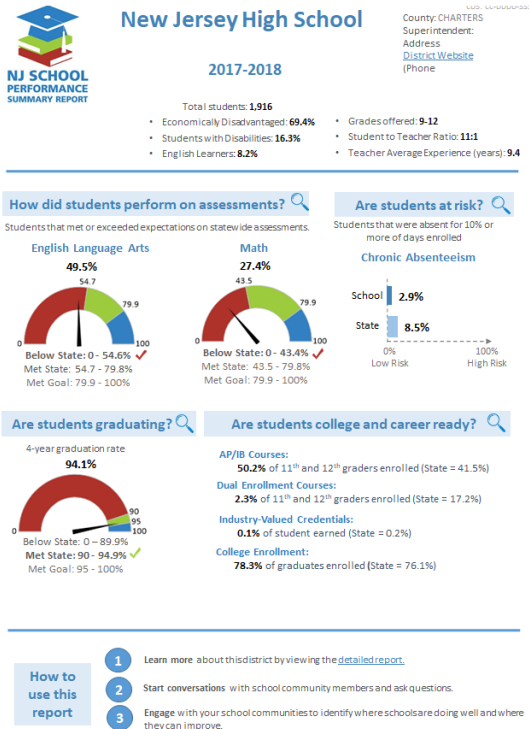
Teachers and Students by Demographic Information – Our School



	Teachers in our School	Students in our School
■ White	93.9%	75.7%
■ Hispanic	4.4%	13.7%
■ Black or African American	1.2%	5.9%
■ Asian	0.0%	3.0%
■ Native Hawaiian or Pacific Islander	0.0%	0.1%
■ American Indian or Alaska Native	0.0%	0.1%
■ Two or More Races	0.4%	1.4%

College and Career Readiness (1 of 2)

The College and Career Readiness Section of the Summary Reports shows important information about students' access to challenging coursework.



Are students college and career ready?

AP/IB Courses:

31.6% of 11th and 12th graders enrolled (State = 34.9%)

Dual Enrollment Courses:

0.0% of 11th and 12th graders enrolled (State = 13.3%)

Industry-Valued Credentials:

0.7% of student earned (State = 0.9%)

College Enrollment:

77.9% of graduates enrolled (State = 77.9% [16-month])

College and Career Readiness (2 of 2)

The College and Career Readiness Section of the Summary Reports shows important information about students' access to challenging coursework.

Students Enrolled in One or More Visual and Performing Arts Classes

Visual and Performing Arts Enrollment
97.6% of 6 th through 8 th graders enrolled (State = 89.1%)
50.3% of 9 th through 12 th graders enrolled (State = 51.2%)

Students Enrolled in One or More Classes by Discipline – Grades 9 through 12

Discipline	District	State
Music	16.3%	17.8%
Dance	0.0%	2.1%
Drama	2.0%	4.0%
Visual Arts	35.1%	32.9%

New in the Reports: Progress Toward English Language Proficiency

One of the more significant changes under federal law *ESSA* is that it elevated attention to English Learners (ELs) by adding a measure of English language proficiency (ELP) into the overall school accountability system. Now, all schools are accountable for ensuring ELs make progress toward ELP.

Percentage of English Learners

School	District	State
Rosenauer 14.9%	2.6%	6.5%
JLHS 1.9%		
McAuliffe 2.1%		
Holman 11.1%		
Crawford-Rodriguez 8.5%		

Progress Toward English Language Proficiency

School	District	State
Rosenauer 57.6%	66.9%	50.5%
JLHS 61.1%		
McAuliffe 40%		
Holman 71.1%		
Crawford-Rodriguez 80.5%		

How is a Specific Student Group Performing in Our District?

Spotlight on Economically Disadvantaged (ED) Students

Metric	ED Students: District	Total: District	ED Students: State	Total: State
Percentage of population	22.1%		37.4%	
ELA Performance on State Assessment	38.6%	55%	38.5%	56.7%
Math Performance on State Assessment	32.9%	48.6%	26.6%	45.0%
Student Growth in ELA (mSGP)	48	48	48	50
Student Growth in Math (mSGP)	47	56	47	50
Graduation Rate (4-year)	84.0%	93.6%	84.6%	90.9%
Graduation Rate (5-year)	91.6%	95.4%	87.0%	92.4%
Post-secondary enrollment (16 month)	66.3%	77.9%	66.5%	77.9%
Chronic Absenteeism Rate	20.1%	14.0%	16.1%	10.9%

New in the Reports: Graduation Pathways

What assessment did students use in order to meet their graduation assessment requirement?
New information in the reports shows how our students are qualifying for graduation.

Subject	Pathways for Class of 2018	District	State
ELA	State Assessment	57.5%	57.5%
ELA	Substitute Competency Assessment	34.5%	29.9%
ELA	Portfolio Appeals	1.9%	4.7%
ELA	Alternate Requirements specified in IEP	6.0%	5.1%
Math	State Assessment	61.0%	50.8%
Math	Substitute Competency Assessment	28.2%	34.5%
Math	Portfolio Appeals	3.4%	2.8%
Math	Alternate Requirements specified in IEP	7.3%	5.9%

Student Safety in the District

Narrative Information on Student Safety

- In the Jackson School District, we believe a safe school community is achieved through a collective effort of parents, staff, students and the community. We work collaboratively with the police department, school resource officers, and our school staff to ensure a safe and secure learning experience.

Violence, Vandalism, HIB, and Substance Offenses

Incident Type	Number of Incidents: District	Number of Incidents: State
Violence	43	10,838
Vandalism	13	1,587
Weapons	4	877
Substances	71	4,463
Harassment, Intimidation, Bullying (HIB)	26	7,522
Total Unique Incidents	156	24,938
Incidents Per 100 Students Enrolled	1.89	1.77

Early Childhood Education in the District

Narrative Information on Early Childhood Education

- We offer a Pre-School Inclusion Program - a tuition-based educational environment that provides parents of students who are 3 and 4 years old the opportunity to register for a developmentally appropriate early learning experience within the school district. Special needs and typically developing pre-schoolers come together in an inclusive classroom where language, academic and social skills will be developed in a nurturing environment.

Enrollment Trends by Full/Half Day PK and KG in our District

Type of Pre-K	2015-2016	2016-2017	2017-2018
PK - Half Day	139	161	137
PK - Full Day	50	66	91
KG - Half Day	0	0	0
KG - Full Day	546	514	491

Student Supports and Services

Narrative Information on Student Supports and Services

- Jackson District Schools offer a comprehensive approach to supporting diverse learners offering programs and interventions based on research and identified best practices. Specialized instruction is offered to English Language Learners. Special needs programs support the least restrictive environment requirements and include inclusion programs, small group instruction and self-contained specialized instructional programs.

Student and Staff Ratios

Category	District
Students to Teachers	12:1
Students to Administrators	202:1
Teachers to Administrators	16:1
Students to Librarian/Media Specialists	827:1
Students to Nurses	551:1
Students to Counselors	344:1
Students to Child Study Team	318:1

Postsecondary Enrollment

Postsecondary Information from Narrative

- Programs to assist students in applying for college include sponsoring PSAT testing for each student, identifying students who may need fee waivers, evening SAT preparation courses at a nominal fee, and offering the SAT at a district school. Our district graduation rate is 95.5%. Of those graduates, 50% planned to attend a 4-year college and 29% planned to attend a 2-year college, with other students being either undecided or pursuing employment or military service. The class of 2018 was offered a total of \$4.3 million in scholarships. Utilizing the Naviance program helps streamline the intricate application process and identify future goals and major. District-sponsored college preparation and financial aid programs assist parents in securing the most aid possible.

Postsecondary Enrollment Rates: 16-month

Student Group	District	State
Total Population	77.9%	72.8%
White	78.5%	79.4%
Hispanic	66.7%	59.1%
Black or African American	80.5%	61.1%
Asian, Native Hawaiian, or Pacific Islander	**	88.2%
American Indian or Alaska Native	**	74.5%
Two or More Races	**	24.4%

Have Feedback or Questions?

- **Additional resources** are available at: www.njschooldata.org
- **Visit** our district website for updates: www.jacksonsd.org
- **Email** the district: djbaginski@jacksonsd.org
- Take the NJDOE School Performance Reports **feedback survey**:
www.surveymonkey.com/r/VKNTTRC
- **Visit** the NJDOE website at: www.state.nj.us/education
- **Email** the NJDOE: reportcard@doe.nj.gov